

Print Number:

Print Date:

---

**NOBLELIFT**

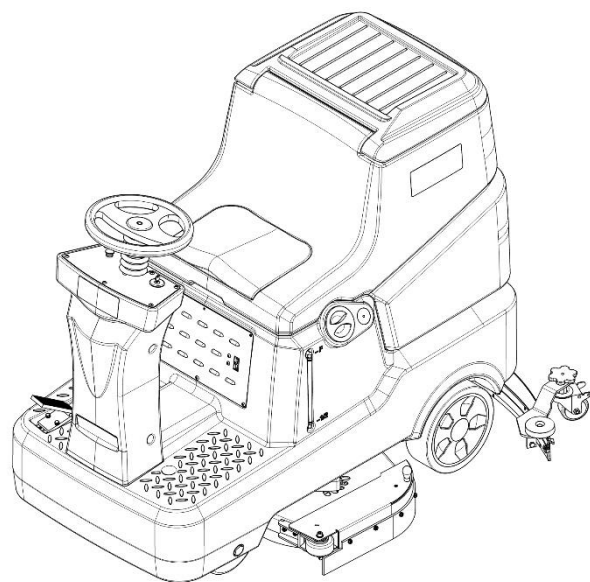


Scan QR Code for More

**Rider scrubber NR810**

**Parts Manual**

**590446020111**



Version V11

Scrubber Identification Number From:

Parts Manual NR810-PM11EN

---

Please order parts from authorized dealers of our company.

In order to avoid wrong delivery, all the orders for spare parts should specify the following items:

- Truck model, identification number and manufacture year.
- Orders for spare parts of mast, hydraulic transmission unit, steering axle, motor, etc. shall indicate the manufacture number of these parts.
- Codes for our company spare parts are shown in the table of parts manual. Please also pay attention to the description of supply status, order quantity, etc. (check the number listed in "Mark" column of the parts manual).

"Mark" Column:

The unmarked indicates the parts are in short supply cycle.

Number 1: supply as package. Indicating these that parts are small parts and seal parts, which are supplied in package unit and in short supply cycle.

Number 2: supply with constraints. Indicating that these spare parts are not in stock and will be prepared for production after receiving the order from customers, which are in long supply cycle.

Number 3: phasing-out supply. Indicating that these parts will be replaced by new parts due to technical improvements and the current stock will not be available when these parts run out. Please check the description of technical improvements notice.

Number 4: supply as assembly. Indicating that these parts are assembly parts defined by manufacture process, which cannot be supplied as a single part.

Number 5: check other tables.

This parts manual is the property of our company and can be shared under the confidential agreement only, our company has the right to claim for compensation of any unauthorized use. Copy without permission is not allowed. Figures in the manual are not limited by the original design. our company reserves the right to improve the products for continuous technology progress.

---

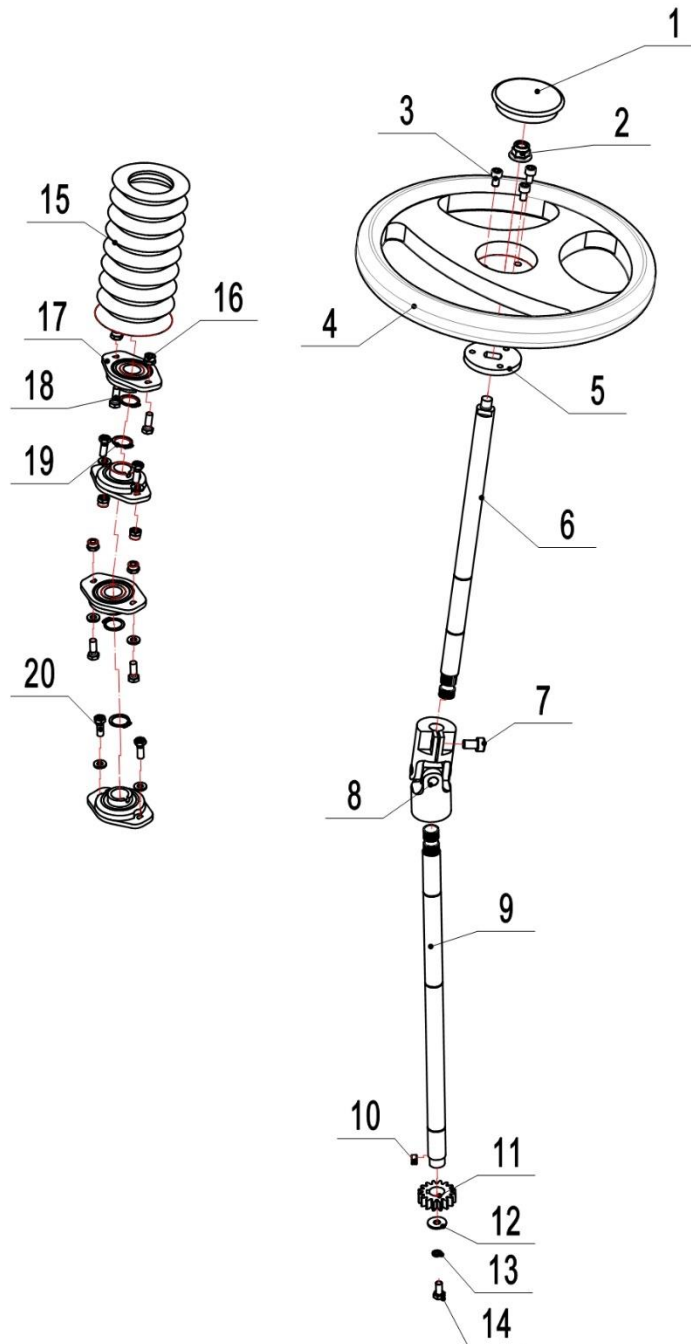
# Table of Contents

Chapter 1: Drive system .....	1
01 Steering machine (590446013501) .....	1
02 Drive unit (590446013502).....	3
Chapter 2: Truck Frame .....	5
01 Solution tank (590446021501).....	5
02 Recovery tank (590446021502).....	9
03 Brush system (590446021503) .....	13
04 Front electric motor assembly (590446021504) .....	15
05 Squeegee system (590446021505).....	17
06 Solution assembly (590446021506).....	19
07 Front body (590446021507) .....	21
08 Retaining edge (590446021508).....	23
09 Wiper frame (590446017001).....	25
10 Wheels (590446017002).....	27
Chapter 3: Electrical parts.....	29
01 Electronic control components (590446033001).....	29
02 Traction Battery (590446037001).....	31
03 Charger (590446036501) .....	33
04 Wire Harness (Lead-acid battery) (590446033002).....	35
05 Wire Harness (Lithium battery) (590446033003).....	37
Chapter 4: Others .....	39
01 Labels and decals (590446047001).....	39
Appendix.....	41
01 Electrical Circuit Diagram (Lead-acid battery) (590446045502).....	41
02 Electrical Circuit Diagram (Lithium battery) (590446045503) .....	42
02 Easy Wornout Parts List.....	43
03 Consumable Parts List .....	44



## Chapter 1: Drive system

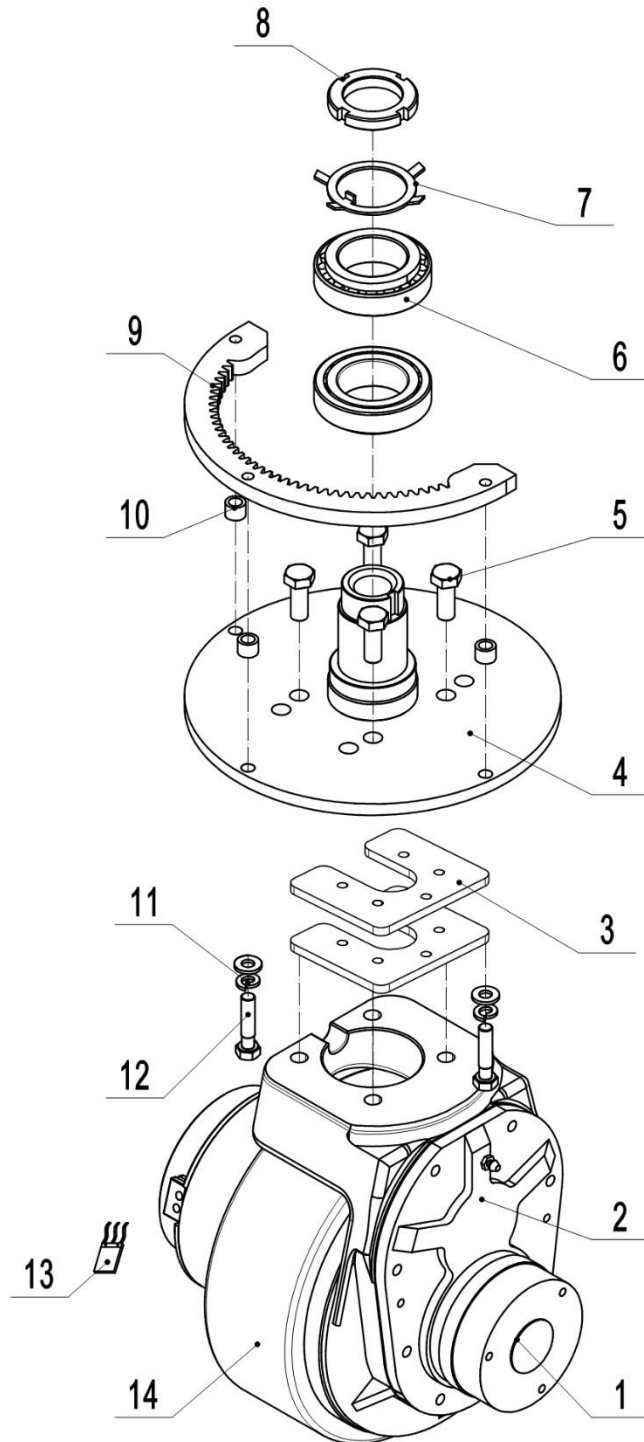
### 01 Steering machine (590446013501)



590446013501

## 01 Steering machine (590446013501)

No.	Item Code	Mark	Item Description	Qty.	Substitute	Note
1	590498520132		Steering Wheel Cap	1		
2	590198520065		Nut M10	1		
3	590398520056		Screw M6x10	3		
4	590498520050		Steering Wheel	1		
5	590398520039		Fixed Sheet Metal	1		
6	590498520041		Shaft	1		
7	590198520100		Screw M8x25	2		
8	590398520077		Universal Joint	1		
9	590398520033		Lower Shaft	1		
10	590398520076		Key	1		
11	590398520037		Gear	1		
12	590398520051		Gasket	1		
13	590198520075		Spring Washer	1		
14	590398520055		Screw M6x12	1		
15	590498520137		Protective Cover	1		
16	590198520067		Nut M6	6		
17	590398520067		Bearing Base	3		
18	590198520087		Screw M6x20	6		
19	590398520061		Circlip	4		
20	590398520048		Screw M6x20	2		

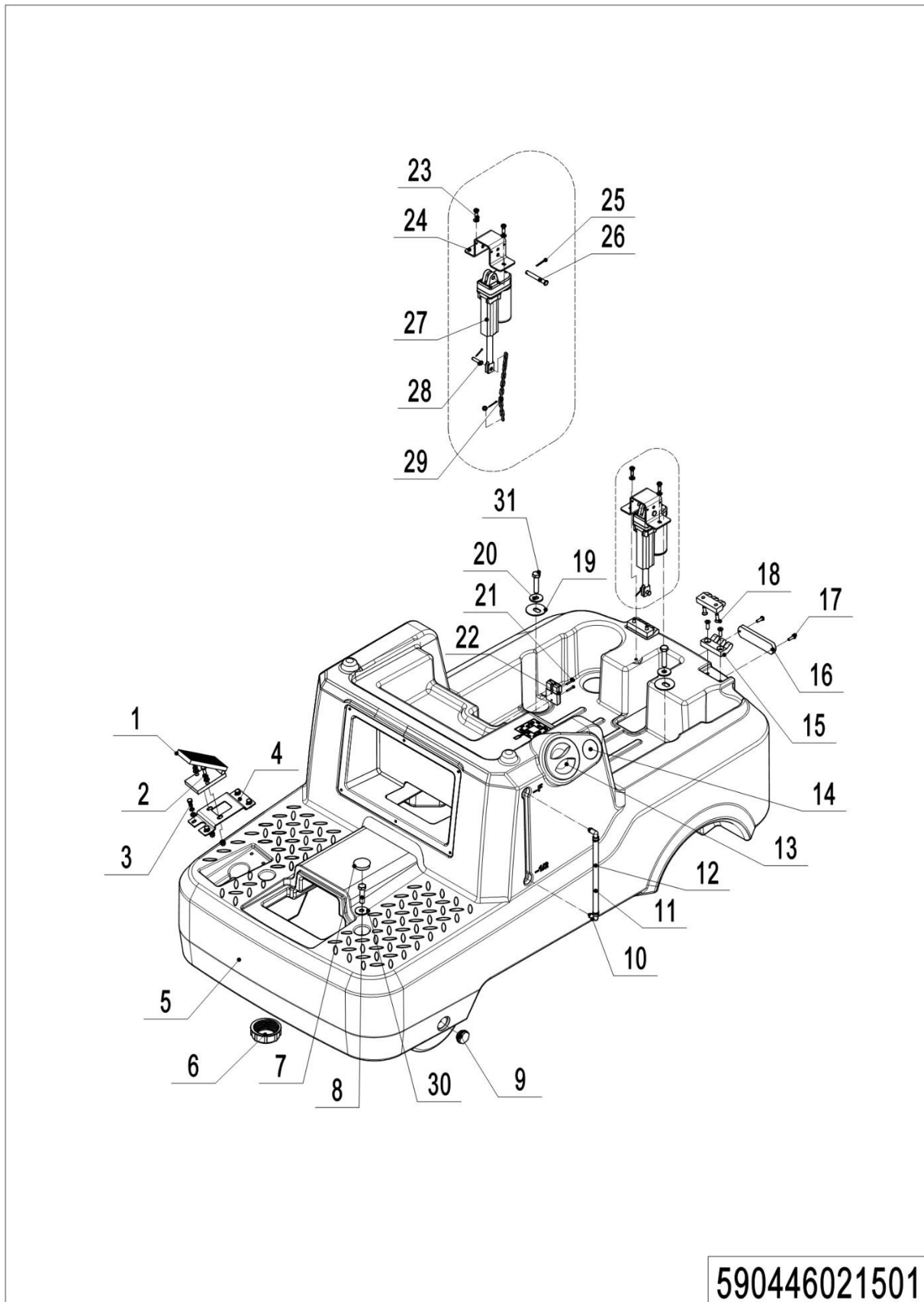
**02 Drive unit (590446013502)****590446013502**

## 02 Drive unit (590446013502)

No.	Item Code	Mark	Item Description	Qty.	Substitute	Note
1	590498520310		Brake	1		
2	590498520056		Drive Motor	1		
3	590498520097		Raising Plate	2		
4	590498520029		Mounting Plate	1		
5	590198520150		Screw M8x35	5		
6	590398520075		Bearing	2		
7	590398520054		Gasket	1		
8	590398520065		Nut M36	1		
9	590498520042		Ring Gear	1		
10	590498520133		Spacer Bush	3		
11	590198520074		Spring Washer	8		
12	590198520145		Screw M8x30	3		
13	590498520305		Carbon Brush	1		
14	590498520309		Motor Pulley	1		

## Chapter 2: Truck Frame

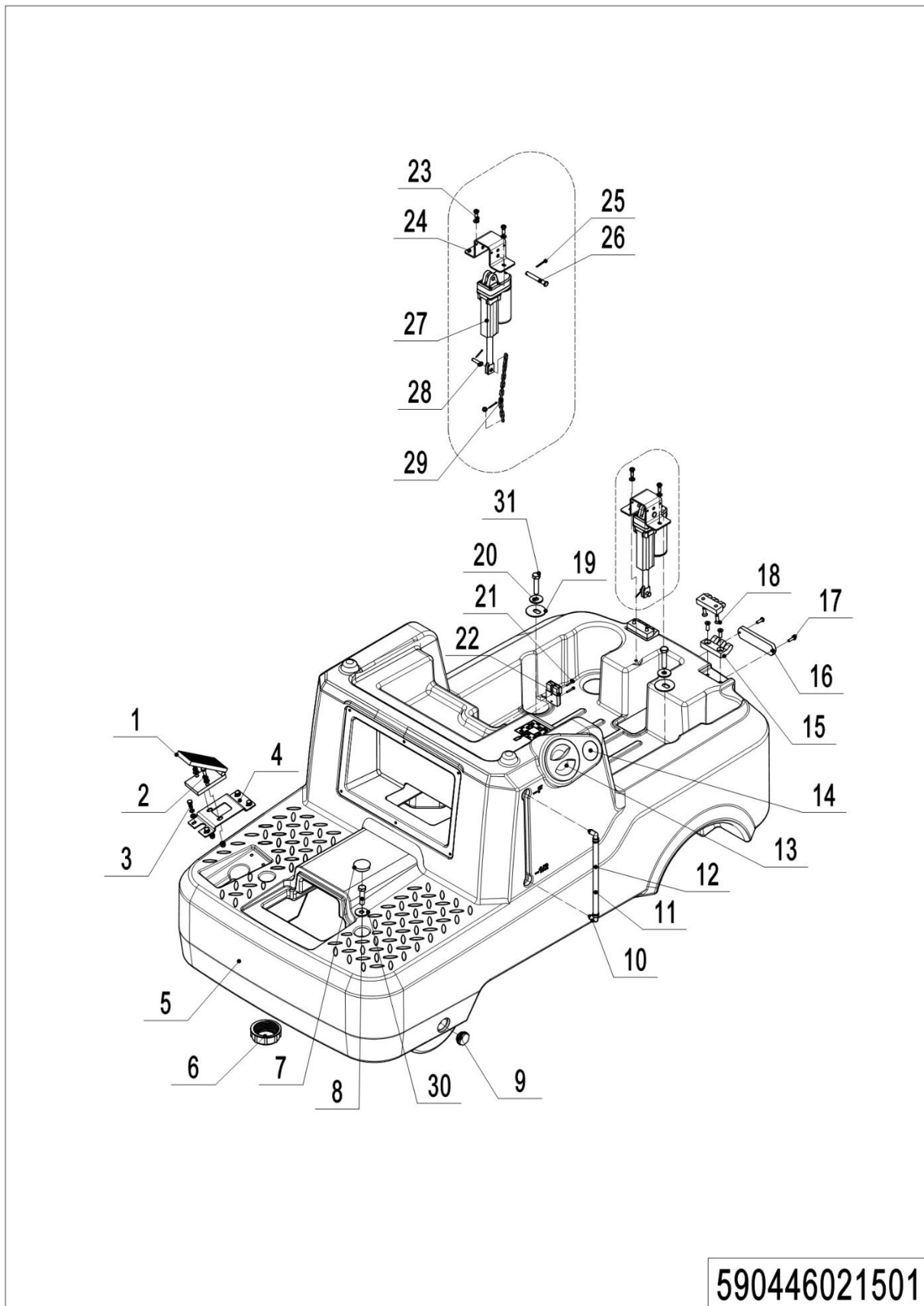
### 01 Solution tank (590446021501)



## 01 Solution tank (590446021501)

No.	Item Code	Mark	Item Description	Qty.	Substitute	Note
1	590398510006		Accelerator	1		
1	590398520107		Accelerator	1		For Li-battery
2	590198520142		Screw M6x16	2		
2	590198520104		Screw M8x16	2		For Li-battery
3	590198520142		Screw M6x16	4		
4	590398520022		Sheet Metal	4		
4	590398520108		Fixed Plate	1		For Li-battery
5	590498510001		Solution Tank	1		
6	590398520008		Drain Cap	1		
7	590498520017		Cap	2		
8	590498520065		Screw M10x45	4		
9	590498520300		Oil Gauge	1		
10	590198520128		Right-angle Joint	2		
11	590498520239		Hose	1		0.23m
12	590198520130		Floating Ball	1		
13	590398520007		Water Filling Cap	1		
14	590498520053		Water Pipe	1		
15	590498520126		Hinge	2		
16	590398510010		Warning Light	1		
17	590198520092		Screw M4x10	2		
18	590498520304		Screw M6x16	8		
19	590498520302		Gasket	2		
20	590498520303		Rubber Gasket	2		
21	590498520082		Screw M5x30	2		
22	590498510010		Wire Harness	1		
23	590198520142		Screw M6x16	2		
24	590498520138		Mounting Plate	1		
25	590398520069		Pin	3		
26	590498520068		Pin Shaft	1		
27	590498510009		Push Motor	1		

## 01 Solution tank (590446021501) Continuation

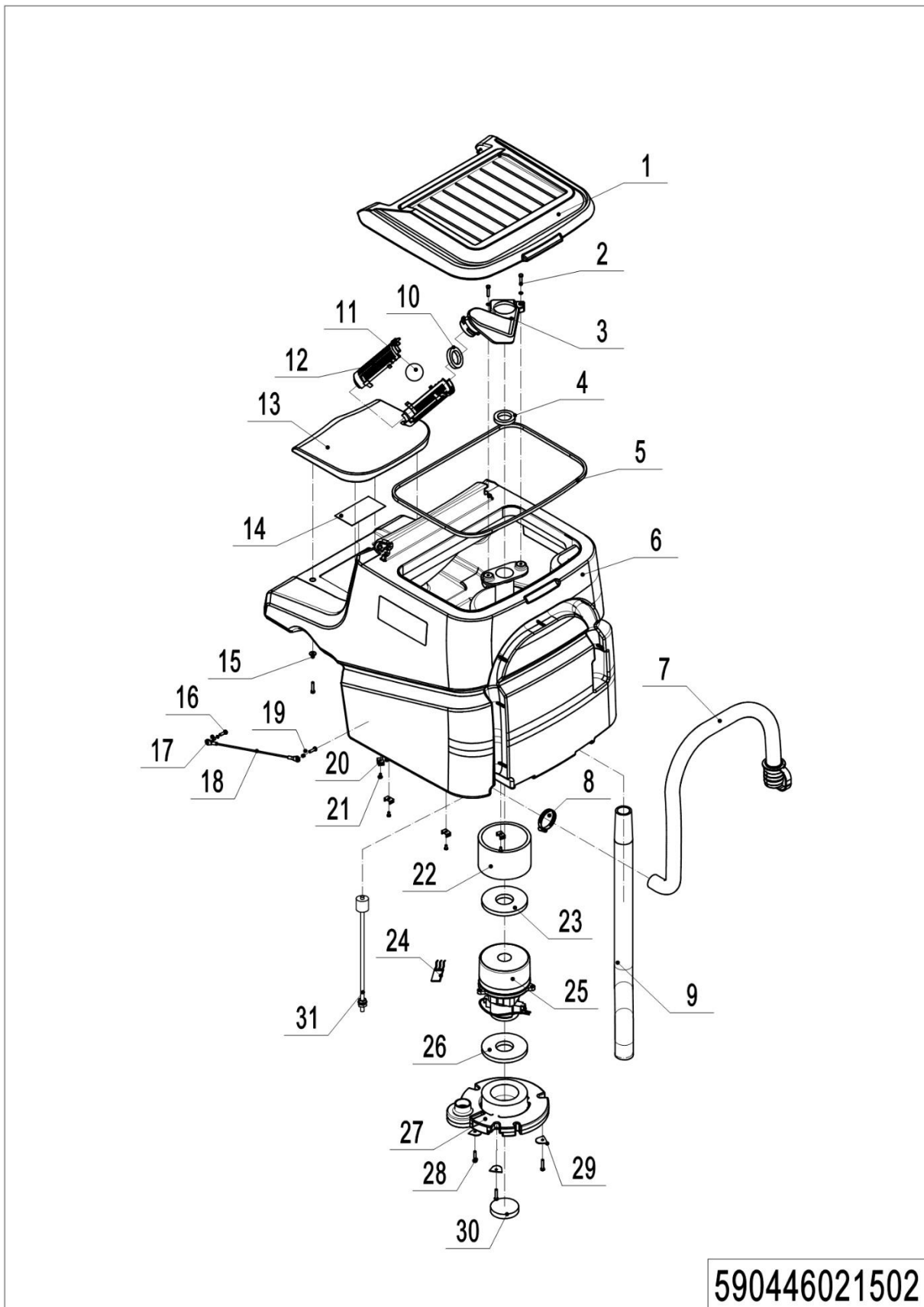


1= Supply as package. 2= Supply with constraints. 3= Phasing-out supply. 4= Supply as assembly. 5= Check other tables.

---

**01 Solution tank (590446021501) Continuation**

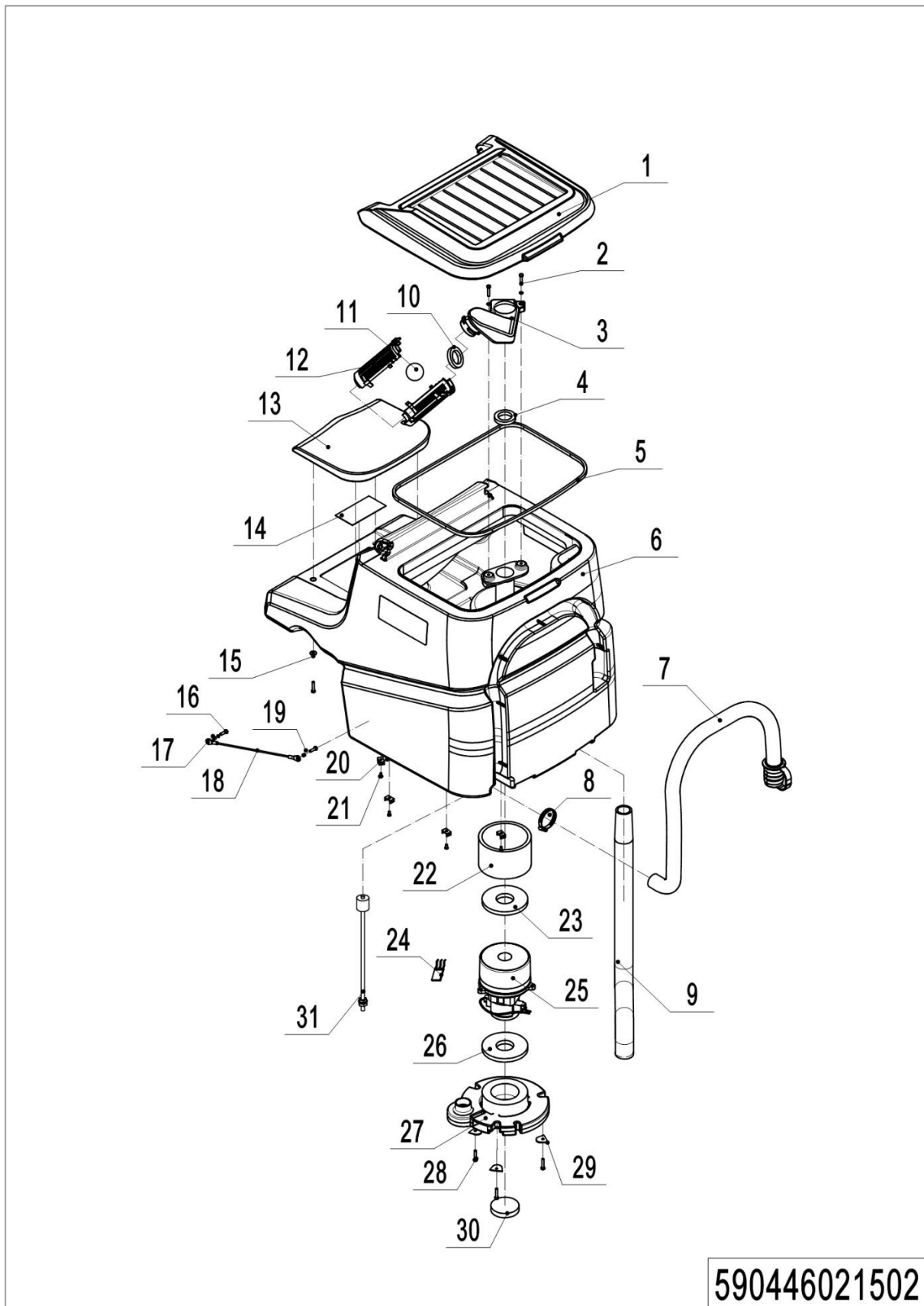
<b>No.</b>	<b>Item Code</b>	<b>Mark</b>	<b>Item Description</b>	<b>Qty.</b>	<b>Substitute</b>	<b>Note</b>
28	590398520059		Pin Shaft	2		
29	590498520128		Chain	1		0.3m
30	590198520080		Gasket	2		
31	590498520065		Screw M10x45	2		

**02 Recovery tank (590446021502)**

## 02 Recovery tank (590446021502)

No.	Item Code	Mark	Item Description	Qty.	Substitute	Note
1	590498520022		Recovery Tank Cap	1		
2	590198520144		Screw M6x25	2		
3	590198520013		Floating Ball Cage Bracket	1		
4	590198520059		Sealing Pad	1		
5	590498520261		Sealing Strip	1		1.65m
6	590498520020		Recovery Tank	1		
7	590498520055		Drain Hose	1		
8	590198520105		Hoop	1		
9	590498520054		Suction Pipe	1		
10	590198520224		Sealing Ring	1		
11	590198520015		Floating Ball	1		
12	590198520014		Floating Ball Cage	2		
13	590398520043		Seat Pad	1		
14	590498520136		Seat Switch	1		
15	590198520085		Screw M6x30	4		
16	590198520083		Screw M6x16	2		
17	590398520074		Spacer Bush	2		
18	590398520073		Rope	1		
19	590198520079		Gasket	11		
20	590198520095		Ribbon Base	6		
21	590198520091		Screw M5x12	6		
22	590198520056		Silencing Foam	1		
23	590198520054		Sealing Ring	1		
24	590498520306		Carbon Brush	1		
25	590498510008		Vacuum Motor	1		
26	590198520197		Sealing Pad	1		
27	590198520020		Motor Pressure Plate	1		
28	590198520085		Screw M6x30	3		
29	590198520040		Fixed Flat	3		
30	590198520058		Filter Foam	1		

## 02 Recovery tank (590446021502) Continuation



1= Supply as package. 2= Supply with constraints. 3= Phasing-out supply. 4= Supply as assembly. 5= Check other tables.

---

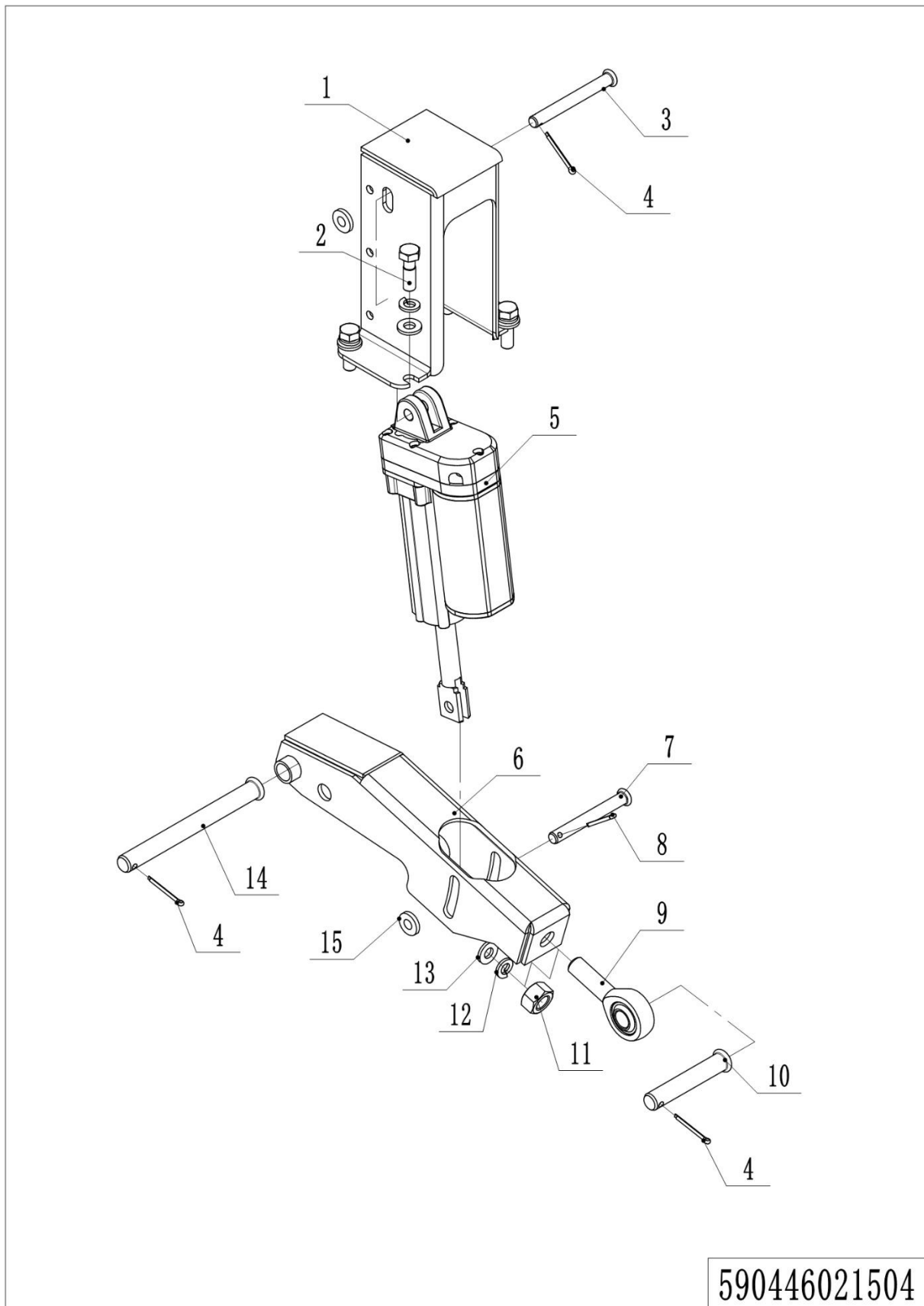
**02 Recovery tank (590446021502) Continuation**

<b>No.</b>	<b>Item Code</b>	<b>Mark</b>	<b>Item Description</b>	<b>Qty.</b>	<b>Substitute</b>	<b>Note</b>
31	590498520125		Sensor	1		



## 03 Brush system (590446021503)

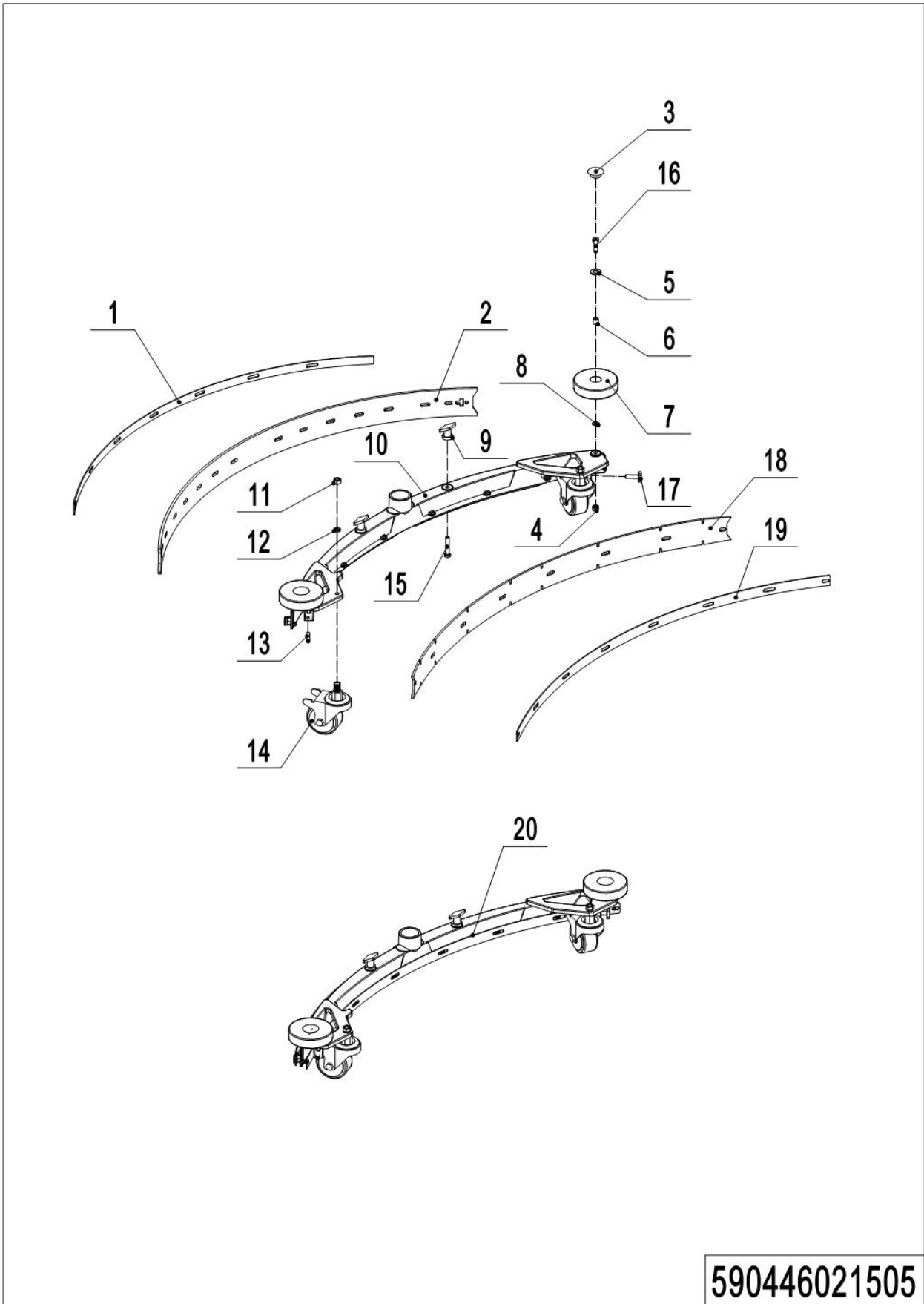
No.	Item Code	Mark	Item Description	Qty.	Substitute	Note
1	590498510005		Brush Motor	1		
2	590198520199		Carbon Brush	2		
3	590498510006		Brush Motor	1		
4	590498520030		Brush Cap	1		
5	590498520079		Nut M4	2		
6	590498520077		Magnet	2		
7	590498520067		Screw M5x20	2		
8	590198520045		Locator Plate	2		
9	590198520010		Brush Buckle	2		
10	590398520064		Nut M20	1		
11	590498510013		15 inch Brush	2		
11	590498520112		15 inch Brush (Soft)	2		Optional
11	590498520113		15 inch Brush (Hard)	2		Optional
11	590498510014		15 inch Needle Disk	2		
12	590198520072		Nut M20	1		
13	590198520087		Screw M6x20	6		
14	590198520075		Spring Washer	6		
15	590198520142		Screw M6x16	8		
16	590198520066		Nut M8	6		
17	590498520033		Linkage	2		
18	590398520072		Spacer Bush	6		
19	590198520145		Screw M8x30	6		
20	590198520117		Washer	6		
21	590198520028		Nylon Washer	2		
22	590398520085		Gasket	2		
23	590498520312		Brush Strip	1		
24	590398520048		Screw M6x20	3		
25	590198520067		Nut M6	3		
26	590198520206		Brush Buckle	2		
26	590198520220		Locating buckle	2		For Needle Disk

**04 Front electric motor assembly (590446021504)**

---

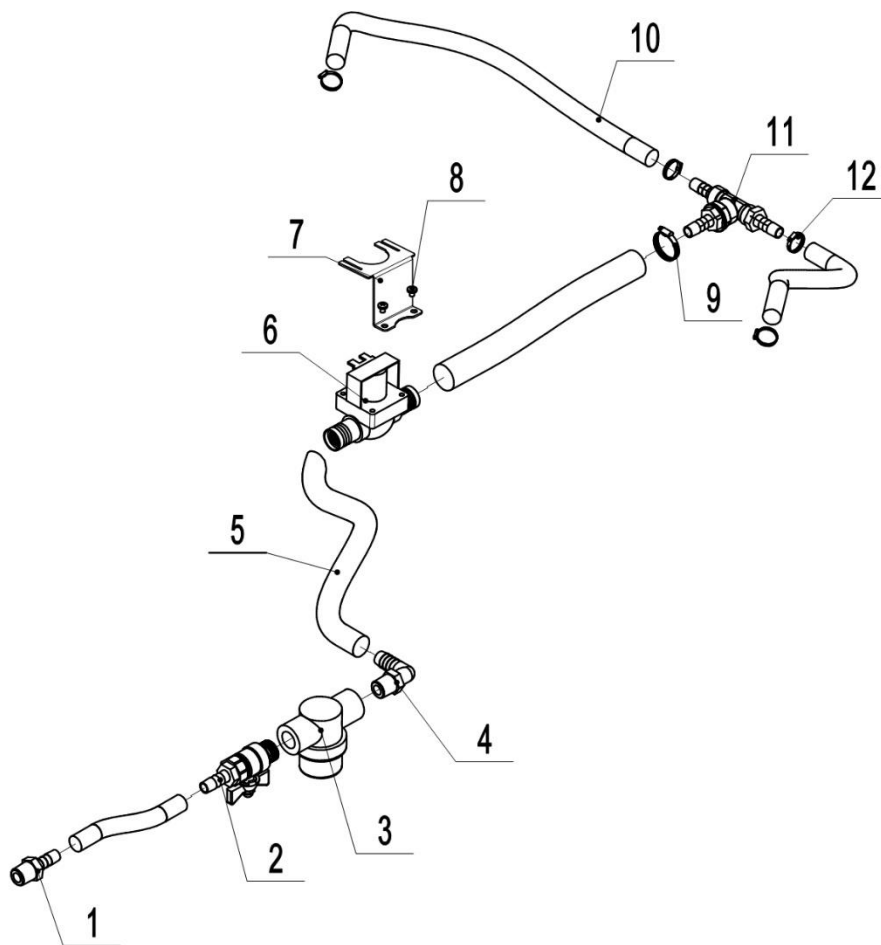
**04 Front electric motor assembly (590446021504)**

No.	Item Code	Mark	Item Description	Qty.	Substitute	Note
1	590498520037		Mounting Plate	1		
2	590398520057		Screw M8x16	4		
3	590498520070		Pin Shaft	1		
4	590198520180		Pin	3		
5	590498510004		Push Motor	1		
6	590498520034		Lifting Linkage	1		
7	590498520068		Pin Shaft	1		
8	590498520145		Card Pin	1		
9	590498510011		Joint Bearing	1		
10	590498520071		Pin Shaft	1		
11	590498520074		Nut M12	1		
12	590198520111		Spring Washer	1		
13	590498520146		Gasket	1		
14	590498520072		Pin Shaft	1		
15	590398520002		Gasket	2		

**05 Squeegee system (590446021505)****590446021505**

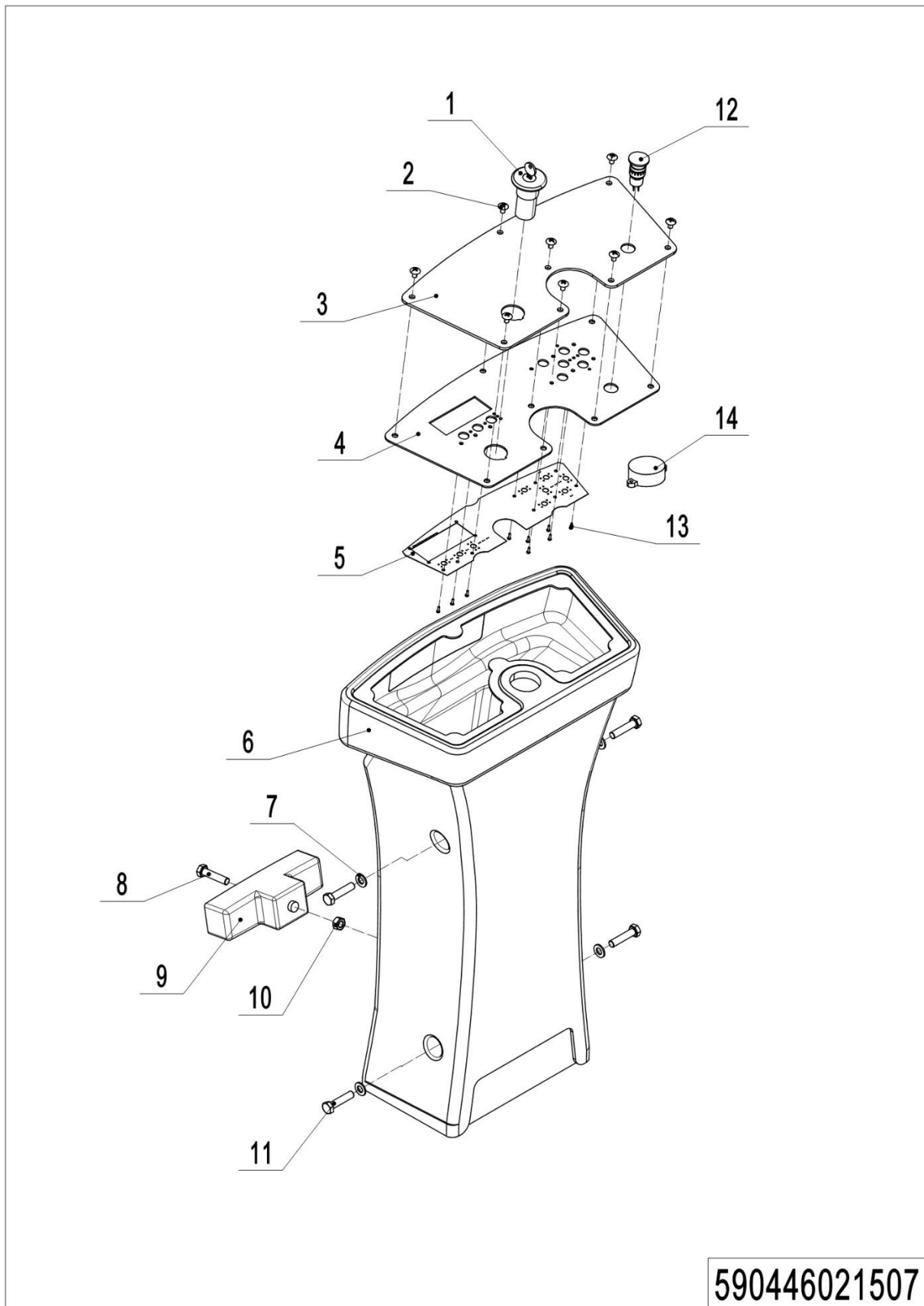
## 05 Squeegee system (590446021505)

No.	Item Code	Mark	Item Description	Qty.	Substitute	Note
1	590498520093		Rear Batten	1		
2	590498520094		Rear Blade	1		
2	590498520116		Rear Blade (NR)	1		Optional
2	590498520117		Rear Blade (PU)	1		Optional
3	590498520139		Wheel Cap	2		
4	590198520066		Nut M8	2		
5	590198520109		Gasket	2		
6	590498520140		Spacer Bush	2		
7	590498520096		Bumper Wheel	2		
8	590498520143		Gasket	2		
9	590498520092		Knob	2		
10	590498520089		Squeegee Blade	1		
11	590498520141		Nut M10	2		
12	590198520073		Spring Washer	2		
13	590198520149		Screw M8x35	2		
14	590498520095		Universal Caster	2		
15	590498520142		Screw M8x45	2		
16	590198520150		Screw M8x35	2		
17	590198520148		Screw M8x30	1		
18	590498520090		Front Blade	1		
18	590498520114		Front Blade (NR)	1		Optional
18	590498520115		Front Blade (PU)	1		Optional
19	590498520091		Front Batten	1		
20	590498510012		Squeegee	1		W/O Blade

**06 Solution assembly (590446021506)****590446021506**

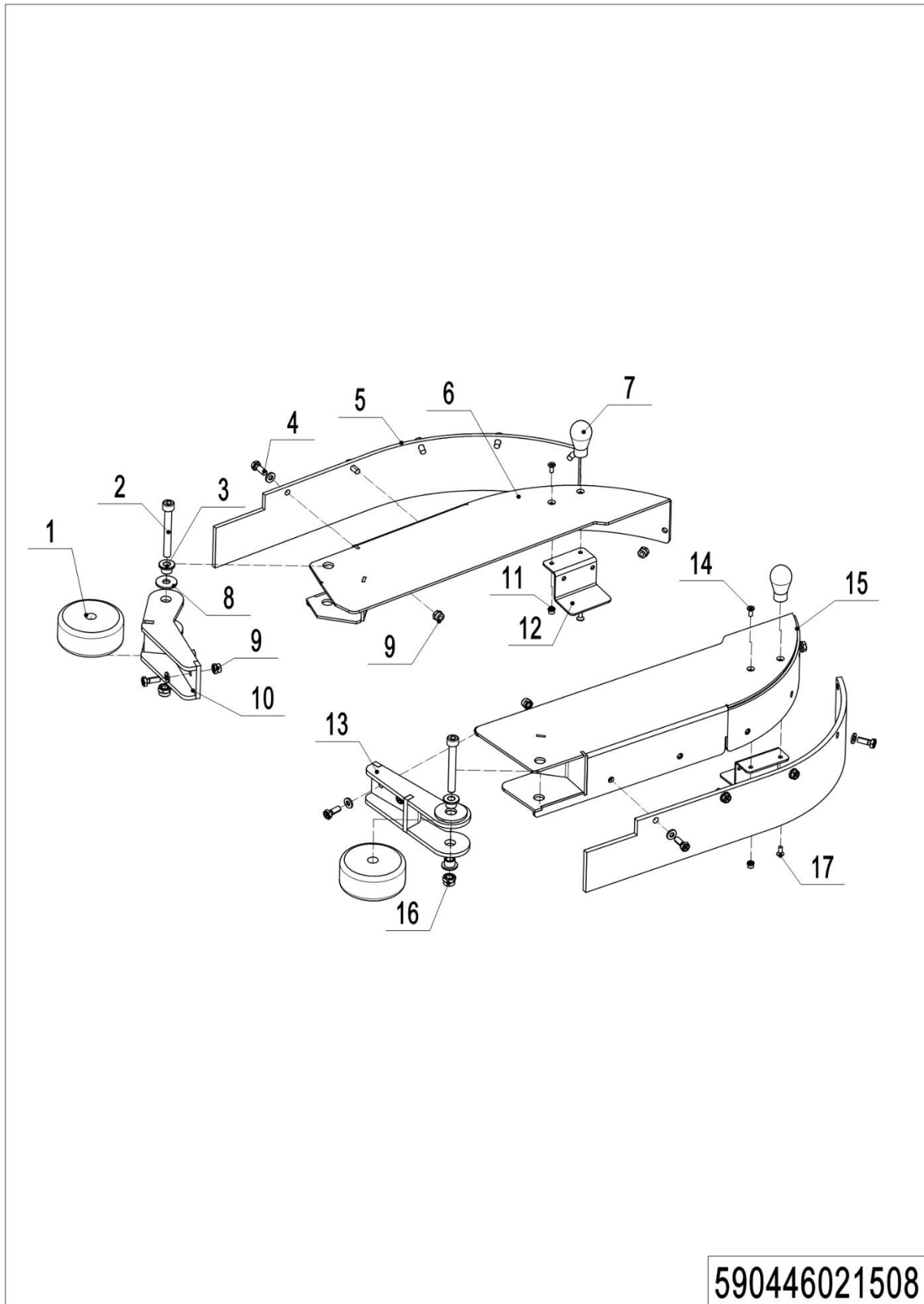
## 06 Solution assembly (590446021506)

No.	Item Code	Mark	Item Description	Qty.	Substitute	Note
1	590498520018		Connectors	2		
2	590498520080		Valve	1		
3	590498520024		Filter	1		
4	590498520019		Right-angle Joint	1		
5	590498520015		Water Pipe	1		1m
6	590498510007		Solenoid Valve	1		
7	590498520031		Fixed Plate	1		
8	590198520092		Screw M4x10	2		
9	590498520076		Hoop	6		
10	590498520262		Water Pipe	1		0.76m
11	590498520014		T-connector	1		
12	590198520096		Hoop	4		

**07 Front body (590446021507)****590446021507**

## 07 Front body (590446021507)

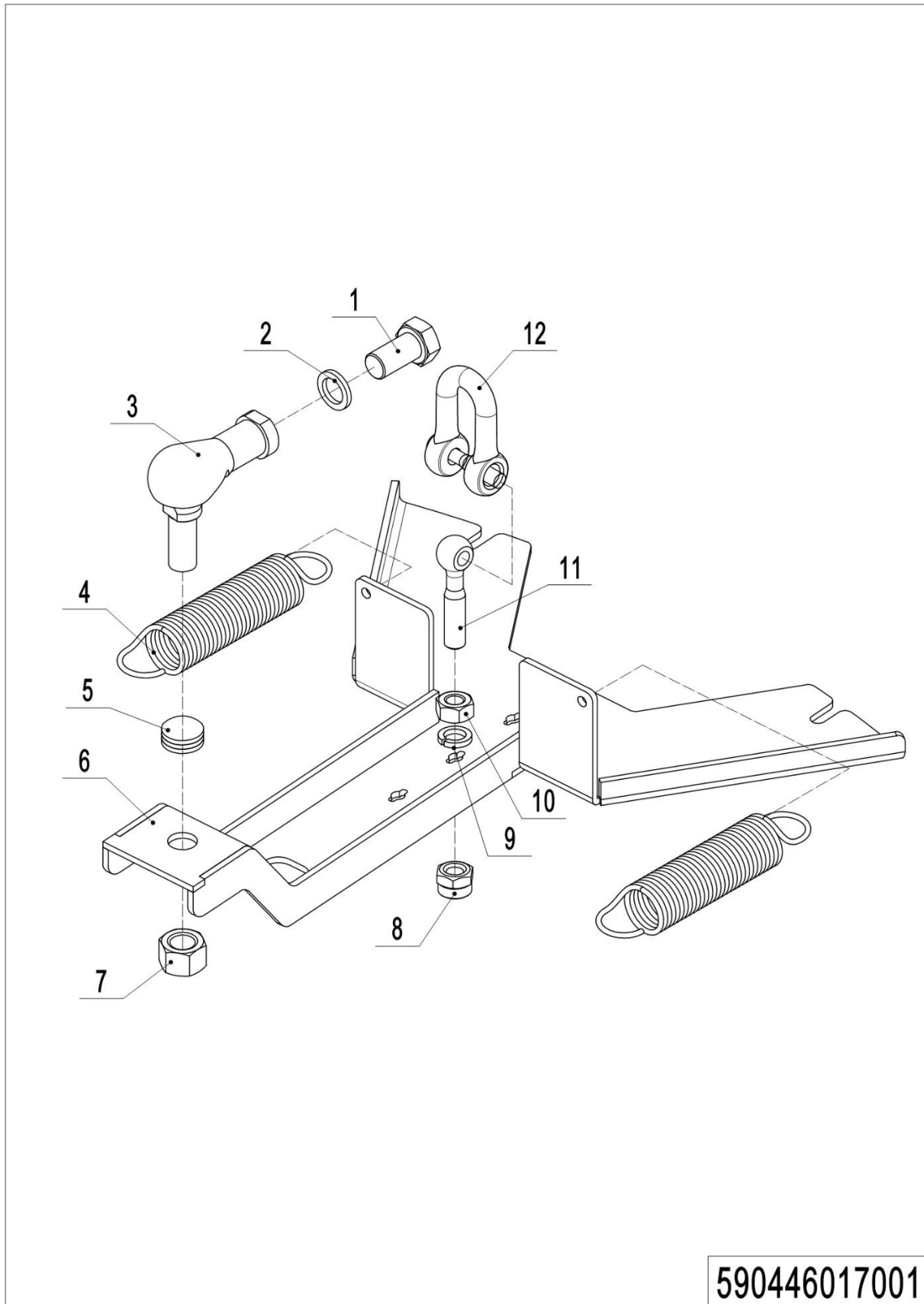
No.	Item Code	Mark	Item Description	Qty.	Substitute	Note
1	590398510004		Key Switch	1		
1	590398520111		Key Switch	1		For Li-battery
2	590198520093		Screw M5x12	8		
3	590498520001		Panel Stickers	2		
4	590498520045		Mounting Plate	1		
4	590498520147		Mounting Plate	1		For Li-battery
5	590498520129		PCB	1		
5	590398520110		PCB	1		For Li-battery
6	590498520021		Front Cover	1		
7	590198520109		Gasket	4		
8	590198520082		Screw M8x16	1		
9	590398510009		Front Light	1		
10	590198520122		Nut M8	1		
11	590498520130		Screw M8x35	4		
12	590398510008		Emergency Switch	1		
13	590398520123		Stud M3x8	9		
13	591398520028		Screw M3x8	9		For Li-battery
14	590398520126		Buzzer	1		

**08 Retaining edge (590446021508)**

1= Supply as package. 2= Supply with constraints. 3= Phasing-out supply. 4= Supply as assembly. 5= Check other tables.

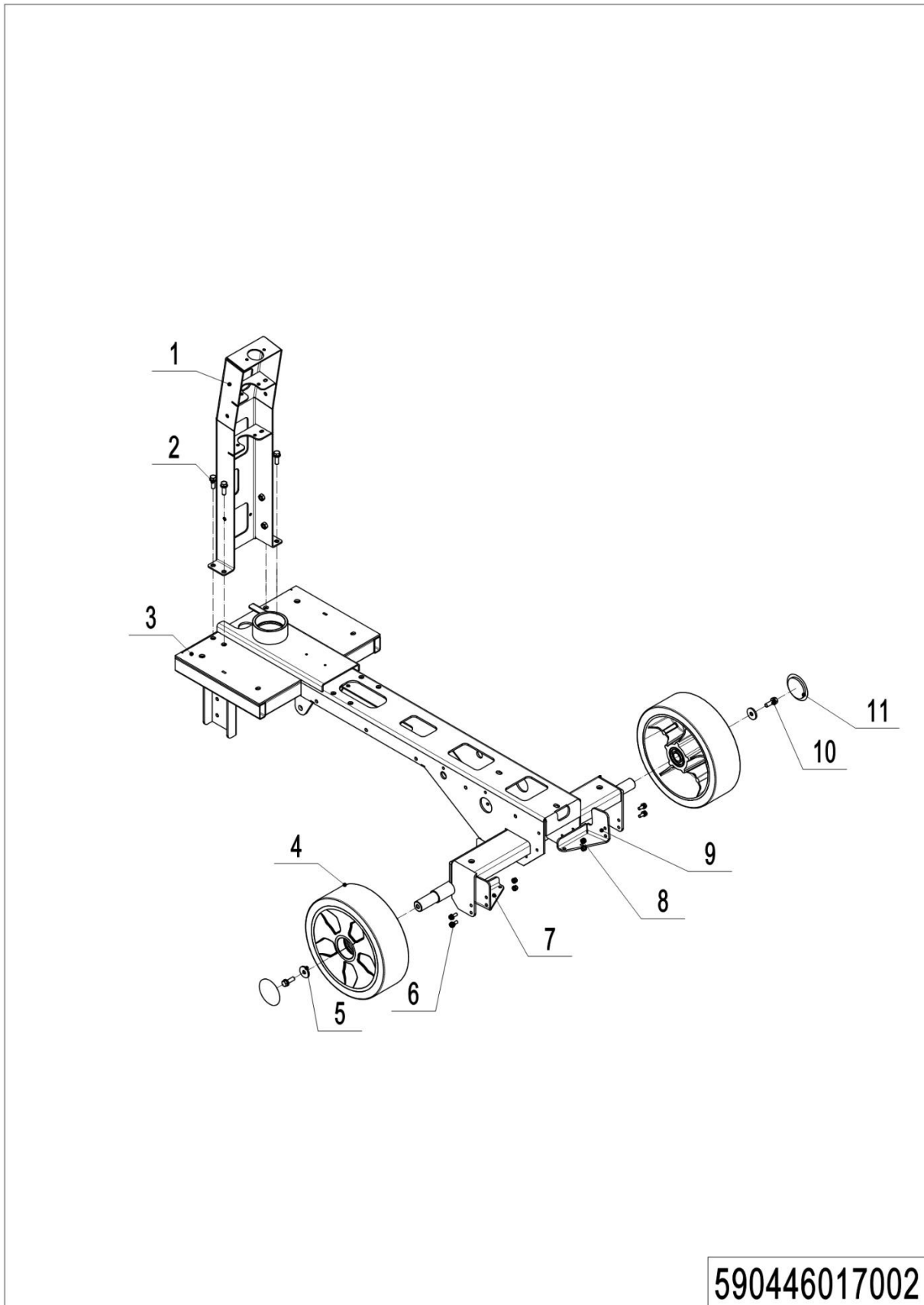
## 08 Retaining edge (590446021508)

No.	Item Code	Mark	Item Description	Qty.	Substitute	Note
1	590498520023		Bumper Wheel	2		
2	590498520069		Screw M8x65	2		
3	590398520072		Spacer Bush	8		
4	590198520142		Screw M6x16	14		
5	590498520007		Brush Strip	2		
6	590498520036		Wing (Right)	1		
7	590498520075		Lifting	2		
8	590398520085		Gasket	2		
9	590198520067		Nut M6	14		
10	590498520027		Bracket (Right)	1		
11	590498520079		Nut M4	2		
12	590498520038		Magnetic Sheet	2		
13	590498520026		Bracket (Left)	1		
14	590498520064		Screw M4x16	2		
15	590498520035		Wing (Left)	1		
16	590198520066		Nut M8	2		
17	590198520092		Screw M4x10	2		

**09 Wiper frame (590446017001)**

## 09 Wiper frame (590446017001)

No.	Item Code	Mark	Item Description	Qty.	Substitute	Note
1	590398520058		Screw M16x25	1		
2	590398520086		Spring Washer	2		
3	590398520066		Universal Joint M16	1		
4	590498520078		Tension Spring	2		
5	590398520053		Gasket	4		
6	590498520028		Fixed Bracket	1		
7	590398520063		Nut M16	1		
8	590198520066		Nut M8	1		
9	590198520074		Spring Washer	1		
10	590198520122		Nut M8	1		
11	590498520120		Screw M8x55	1		
12	590498520121		Shackle	1		

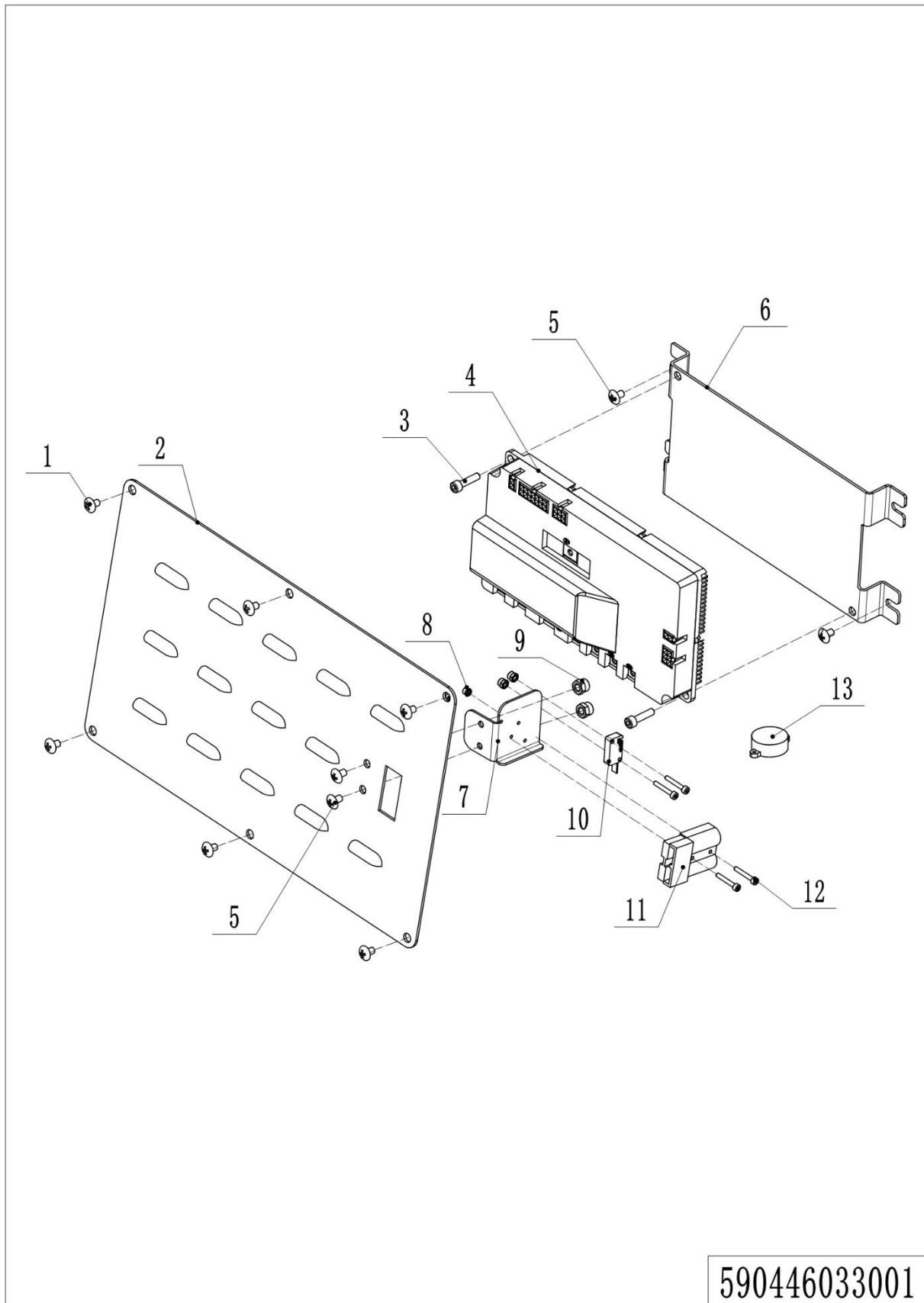
**10 Wheels (590446017002)**

## 10 Wheels (590446017002)

No.	Item Code	Mark	Item Description	Qty.	Substitute	Note
1	590498510003		Front Pillar	1		
2	590398520057		Screw M8x16	4		
3	590498510002		Frame	1		
4	590498520025		Wheel	2		
5	590398520002		Gasket	2		
6	590398520048		Screw M6x20	4		
7	590498520122		Tension Spring Bracket (Left)	1		
8	590198520067		Nut M6	4		
9	590498520123		Tension Spring Bracket (Right)	1		
10	590198520069		Screw M8x20	2		
11	590498520131		Wheel Cap	2		

## Chapter 3: Electrical parts

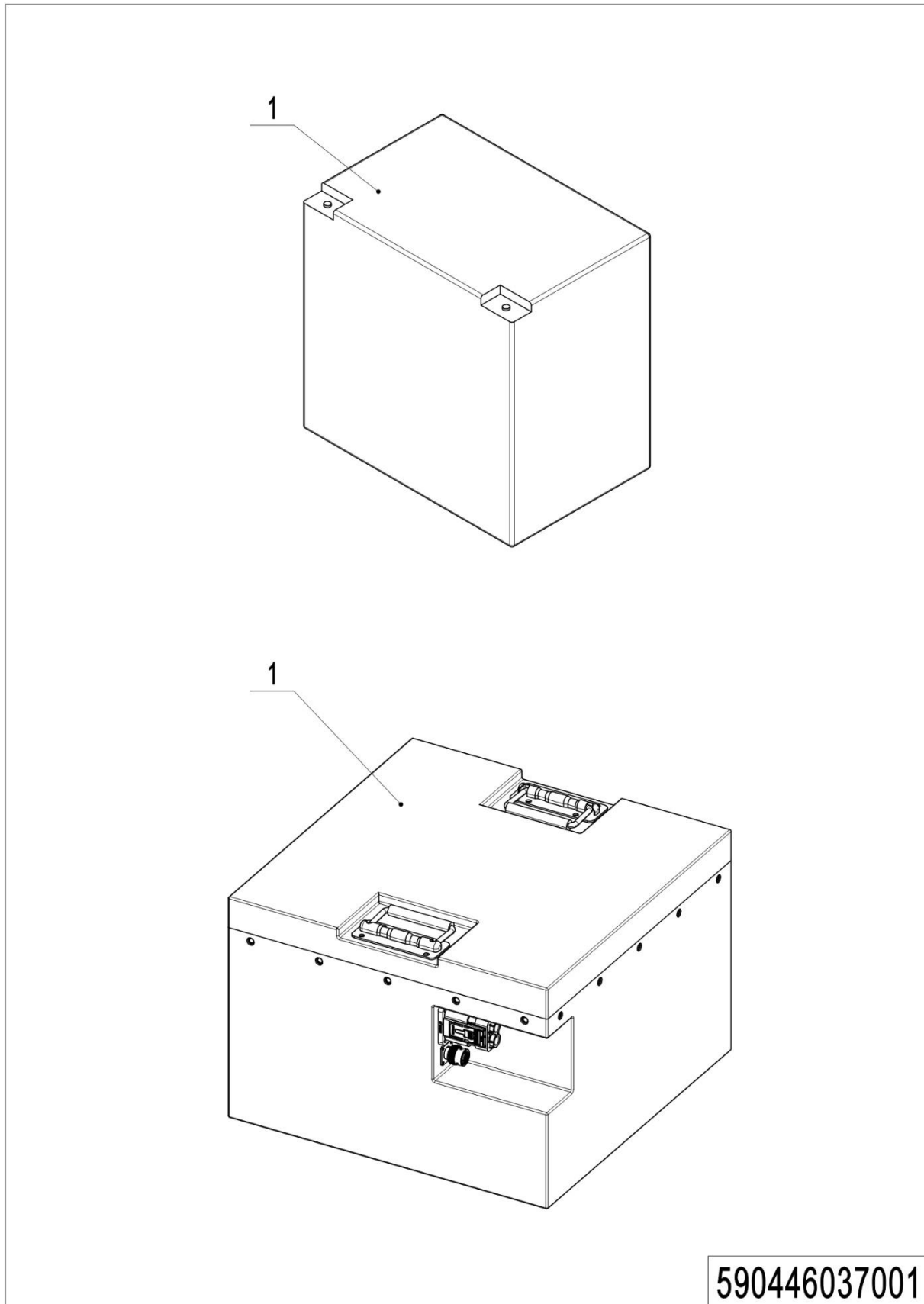
### 01 Electronic control components (590446033001)



1= Supply as package. 2= Supply with constraints. 3= Phasing-out supply. 4= Supply as assembly. 5= Check other tables.

## 01 Electronic control components (590446033001)

No.	Item Code	Mark	Item Description	Qty.	Substitute	Note
1	590198520191		Screw M5x8	6		
2	590498520311		Electrical Close Plate	1		
2	590498520148		Electrical Close Plate	1		For Li-battery
3	590198520198		Screw M6x20	2		
3	590498520082		Screw M5x30	2		For Li-battery
4	590498510015		Controller	1		
4	590498520150		Controller	1		For Li-battery
5	590198520093		Screw M5x12	4		
6	590398520035		Mounting Plate	1		
7	590398520032		Fixed Sheet Metal	1		
7	590198520213		Fixed Plate	1		For Li-battery
8	590198520102		Nut M3	4		
9	590198520068		Nut M5	2		
10	590198520219		Microswitch	1		
11	590498510021		Wire Harness	1		
12	590398520078		Screw M3x20	4		
13	590398520091		Buzzer	1		For Li-battery

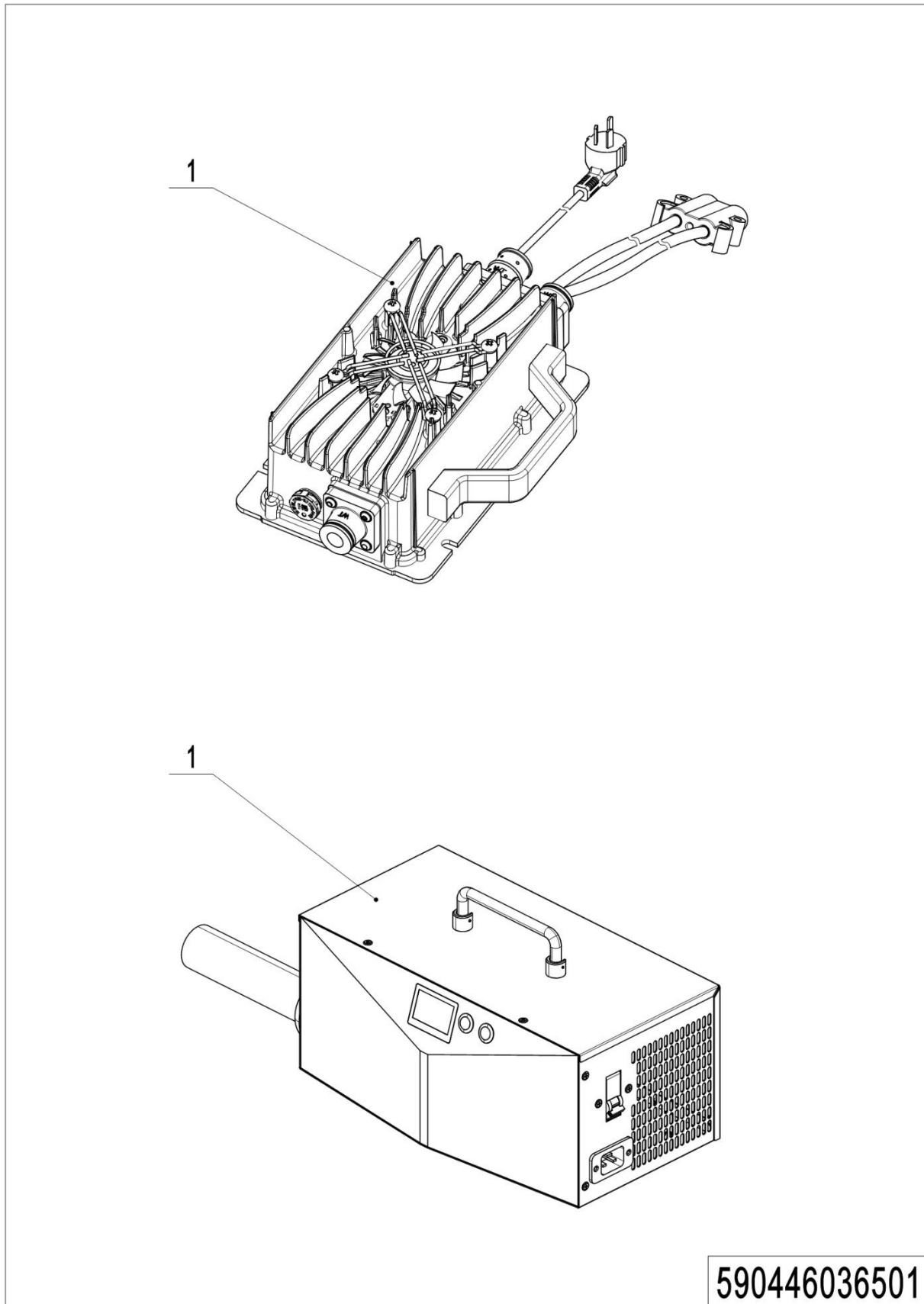
**02 Traction Battery (590446037001)**

590446037001

---

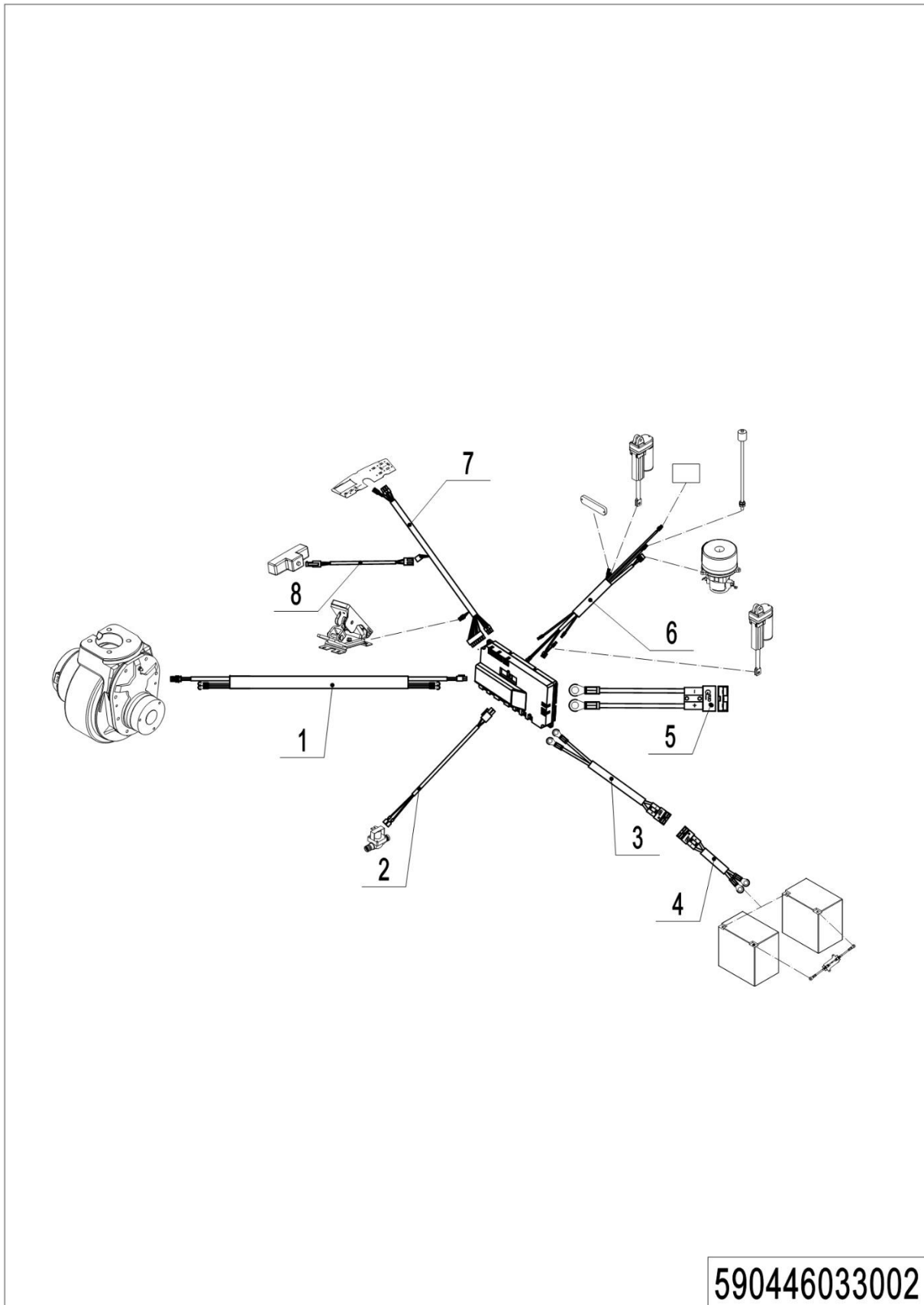
**02 Traction Battery (590446037001)**

<b>No.</b>	<b>Item Code</b>	<b>Mark</b>	<b>Item Description</b>	<b>Qty.</b>	<b>Substitute</b>	<b>Note</b>
1	590498520100		Battery 6V200Ah	4		
1	920600100757		Li-Battery 25.6V205Ah	1		For Li-battery

**03 Charger (590446036501)**

## 03 Charger (590446036501)

No.	Item Code	Mark	Item Description	Qty.	Substitute	Note
1	590498520101		Charger 24V25A(Asia)	1		
1	590498520102		Charger 24V25A(ENG)	1		
1	590498520103		Charger 24V25A(USA)	1		
1	590498520104		Charger 24V25A(EU)	1		
1	590498520105		Charger 24V25A(AUS)	1		
1	590498520106		Charger 24V25A(ITA)	1		
1	590498520107		Charger 24V25A(CH)	1		
1	590498520108		Charger 24V25A(ISR)	1		
1	590498520109		Charger 24V25A(BRA)	1		
1	590498520317		Charger 24V25A(USA)	1		CSA certification
1	921000201216		Li-Charger 24V25A(Asia)	1		Single-phase 110-240V
1	921000201169		Li-Charger 24V25A(USA)	1		Single-phase 110-240V
1	590498520318		Li-Charger 24V25A(USA)	1		CSA certification
1	921000201171		Li-Charger 24V25A(EU)	1		Single-phase 110-240V
1	921000201217		Li-Charger 24V25A(ENG)	1		Single-phase 110-240V
1	921000201218		Li-Charger 24V25A(AUS)	1		Single-phase 110-240V
1	921000201219		Li-Charger 24V25A(ITA)	1		Single-phase 110-240V
1	921000201220		Li-Charger 24V25A(CH)	1		Single-phase 110-240V
1	921000201221		Li-Charger 24V25A(ISR)	1		Single-phase 110-240V
1	921000201222		Li-Charger 24V25A(BRA)	1		Single-phase 110-240V
1	504636510000		Li-Charger 24V40A(Asia)	1		
1	504636510001		Li-Charger 24V40A(EU)	1		
1	504636510002		Li-Charger 24V40A(AUS)	1		
1	504636510003		Li-Charger 24V40A(ENG)	1		
1	504636510006		Li-Charger 24V40A(ITA)	1		
1	504636510007		Li-Charger 24V40A(CH)	1		
1	504636510008		Li-Charger 24V40A(ISR)	1		
1	504636510009		Li-Charger 24V40A(BRA)	1		
1	921000201141		Li-Charger 24V50A(USA)	1		UL, Single-phase 110V

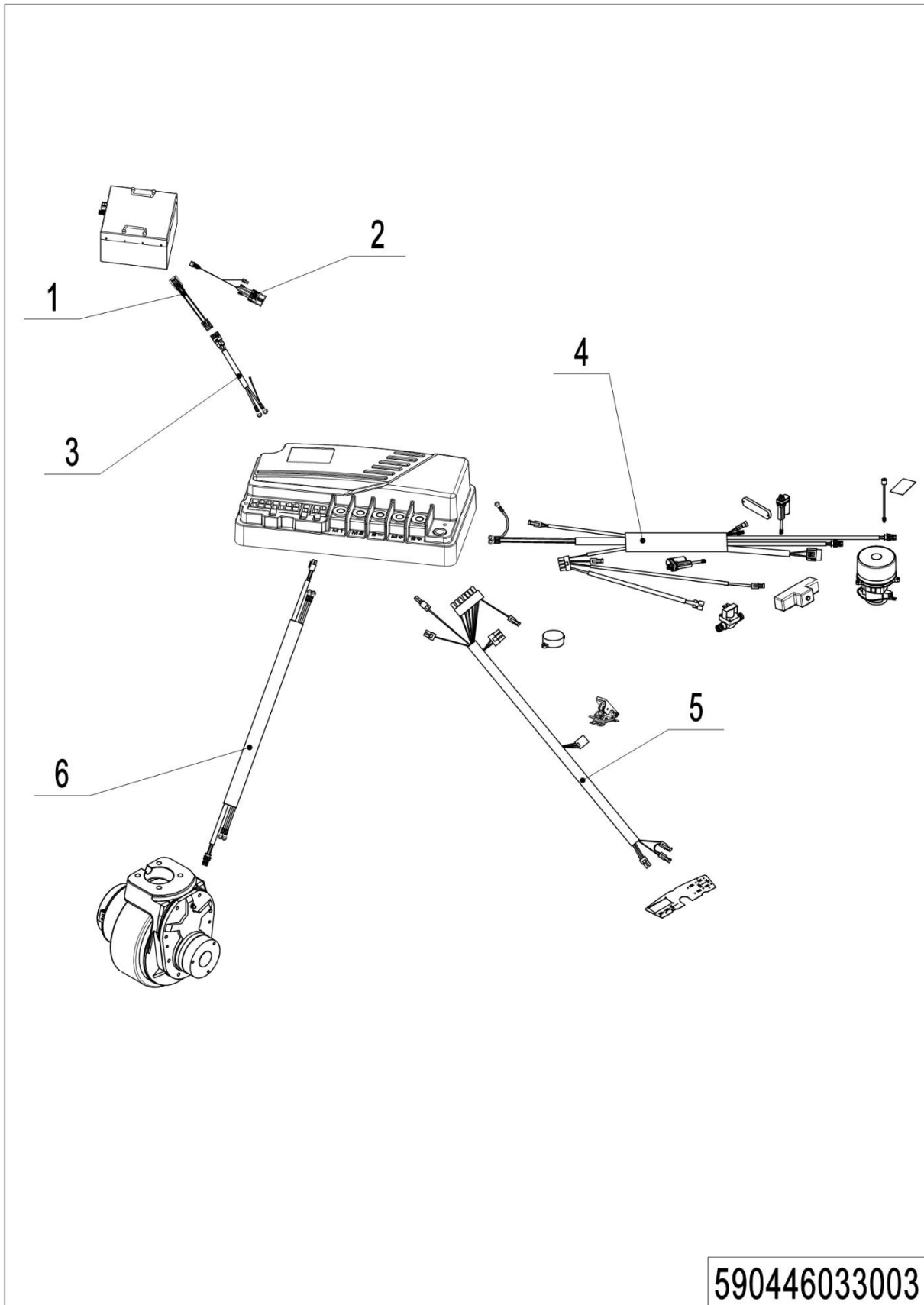
**04 Wire Harness (Lead-acid battery) (590446033002)**

1= Supply as package. 2= Supply with constraints. 3= Phasing-out supply. 4= Supply as assembly. 5= Check other tables.

---

**04 Wire Harness (Lead-acid battery) (590446033002)**

<b>No.</b>	<b>Item Code</b>	<b>Mark</b>	<b>Item Description</b>	<b>Qty.</b>	<b>Substitute</b>	<b>Note</b>
1	590498510016		Wire Harness	1		
2	590498510017		Connection Wire	1		
3	590498510010		Wire Harness	1		
4	590498510023		Connection Wire	1		
5	590498510021		Wire Harness	1		
6	590498510018		Wire Harness	1		
7	590498510019		Wire Harness	1		
8	590498510020		Wire Harness	1		

**05 Wire Harness (Lithium battery) (590446033003)**

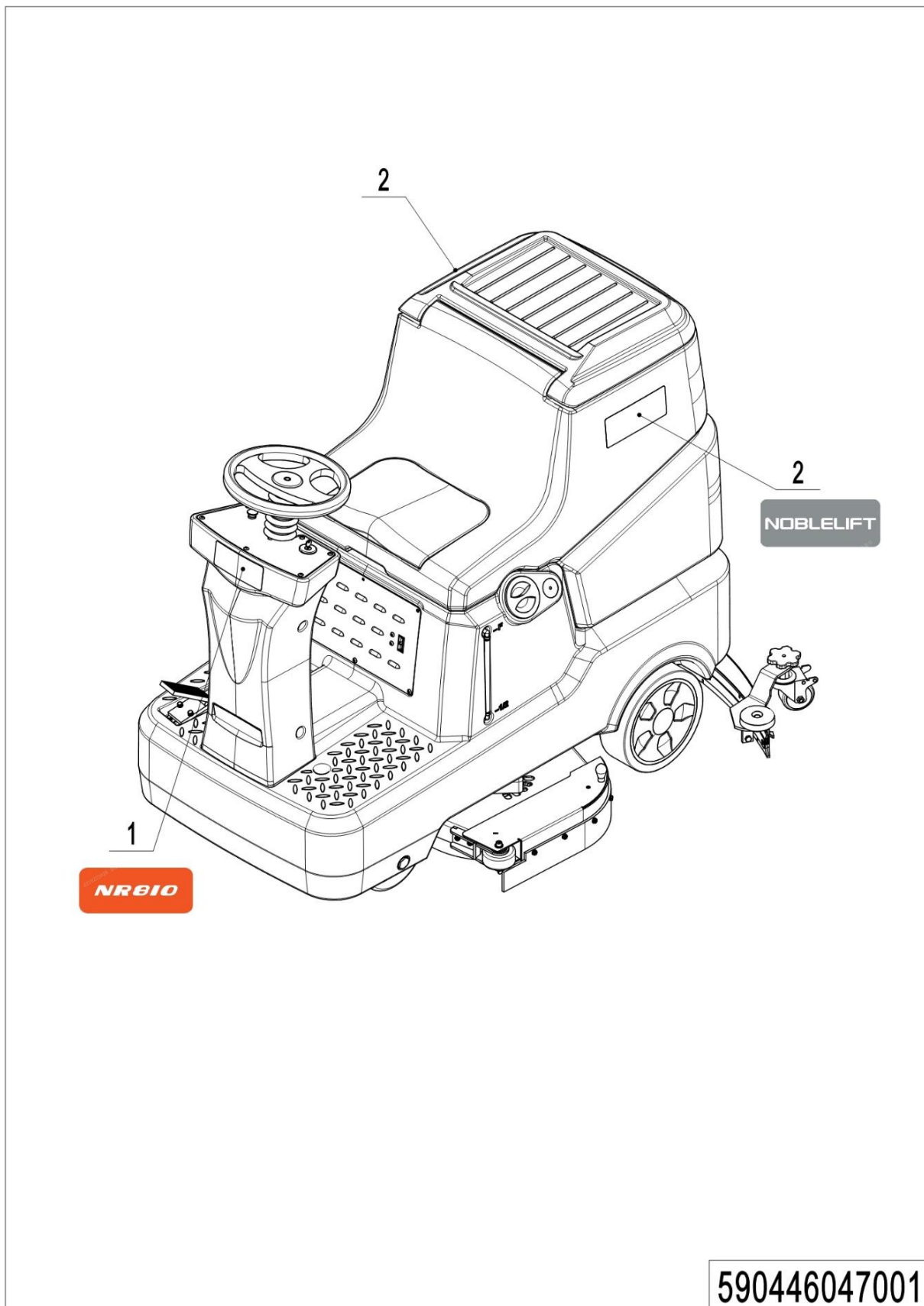
---

**05 Wire Harness (Lithium battery) (590446033003)**

<b>No.</b>	<b>Item Code</b>	<b>Mark</b>	<b>Item Description</b>	<b>Qty.</b>	<b>Substitute</b>	<b>Note</b>
1	590498520170		Wire Harness	1		For Li-battery
2	590498520171		Wire Harness	1		For Li-battery
3	590498520172		Wire Harness	1		For Li-battery
4	590498520173		Wire Harness	1		For Li-battery
5	590498520174		Wire Harness	1		For Li-battery
6	590498510016		Wire Harness	1		For Li-battery

## Chapter 4: Others

### 01 Labels and decals (590446047001)



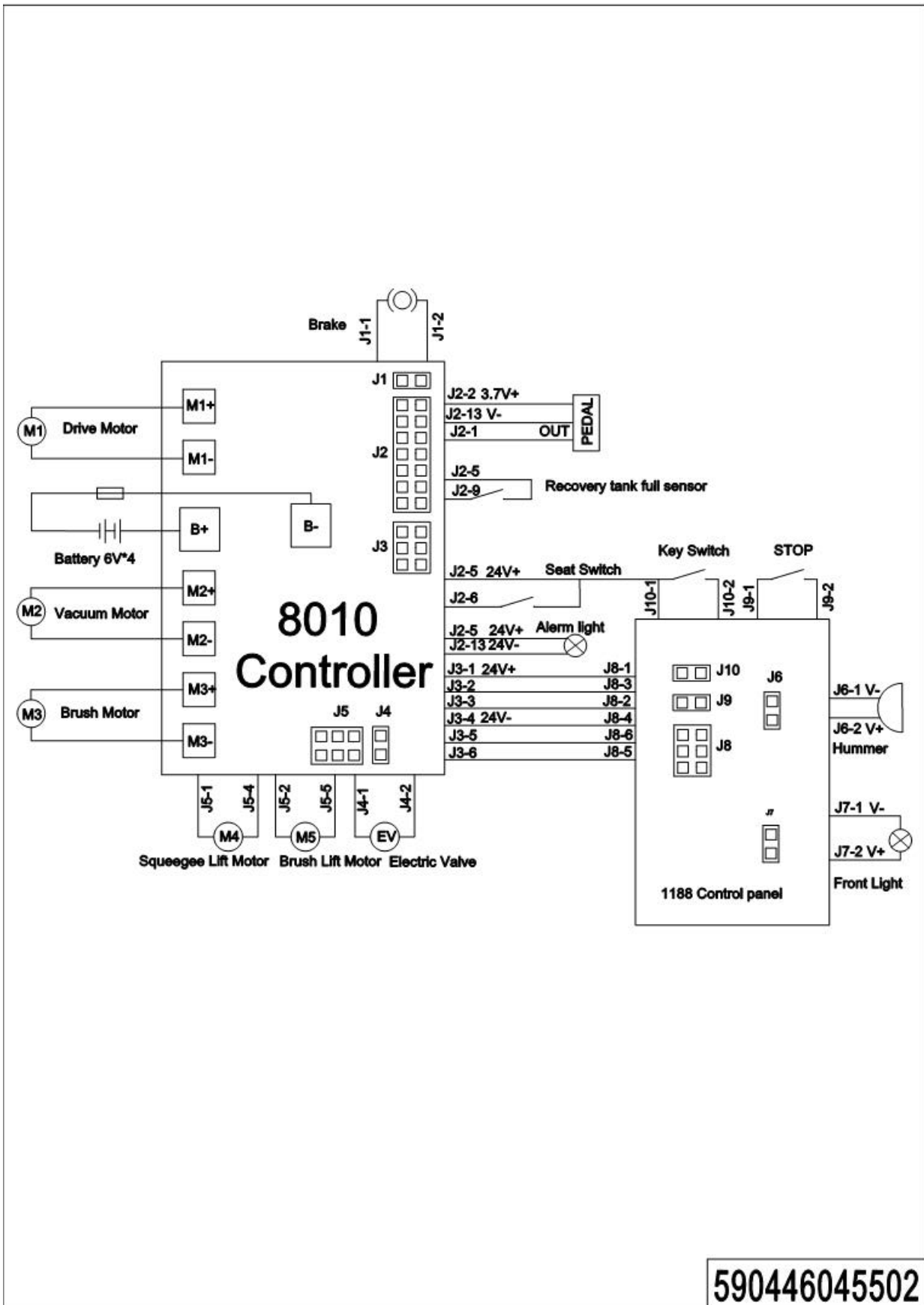
---

**01 Labels and decals (590446047001)**

<b>No.</b>	<b>Item Code</b>	<b>Mark</b>	<b>Item Description</b>	<b>Qty.</b>	<b>Substitute</b>	<b>Note</b>
1	590498520110		Label (NR810)	1		
2	590747020000		Label (NOBLELIFT)	2		

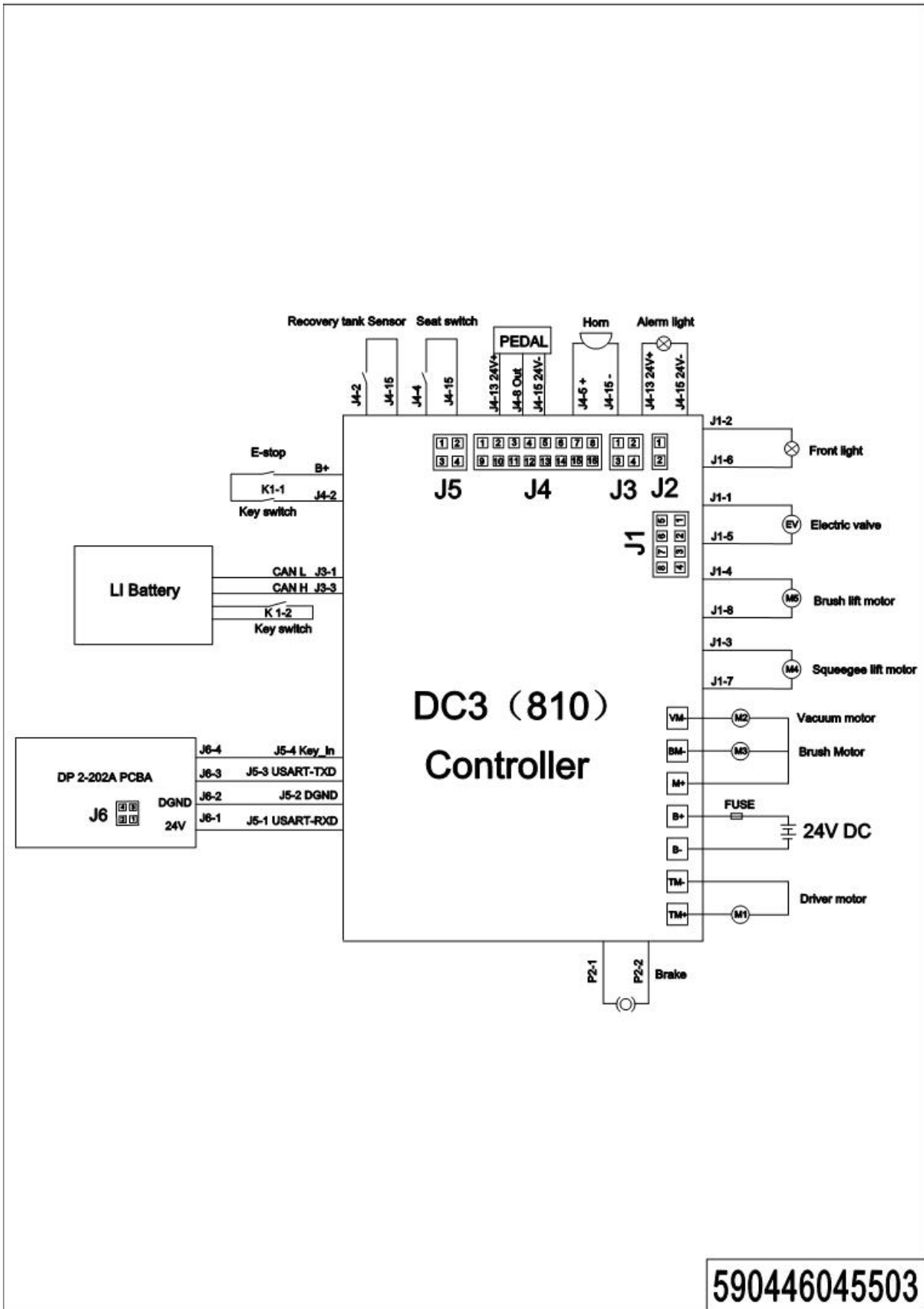
Appendix

01 Electrical Circuit Diagram (Lead-acid battery) (590446045502)



1= Supply as package. 2= Supply with constraints. 3= Phasing-out supply. 4= Supply as assembly. 5= Check other tables.

02 Electrical Circuit Diagram (Lithium battery) (590446045503)



1= Supply as package. 2= Supply with constraints. 3= Phasing-out supply. 4= Supply as assembly. 5= Check other tables.

## 02 Easy Wornout Parts List

No.	Item Code	Item Description	Qty.	Chapter/ Section/ Number
1	590498520050	Steering Wheel	1	Chapter 1/01/04
2	590398510006	Accelerator	1	Chapter 2/01/01
3	590398520107	Accelerator	1	Chapter 2/01/01
4	590398510010	Warning Light	1	Chapter 2/01/16
5	590498510009	Push Motor	1	Chapter 2/01/27
6	590498520261	Sealing Strip	1.65	Chapter 2/02/05
7	590498520055	Drain Hose	1	Chapter 2/02/07
8	590498520054	Suction Pipe	1	Chapter 2/02/09
9	590198520015	Floating Ball	1	Chapter 2/02/11
10	590198520014	Floating Ball Cage	1	Chapter 2/02/12
11	590398520043	Seat Pad	1	Chapter 2/02/13
12	590398510001	Seat Switch	1	Chapter 2/02/14
13	590498510008	Vacuum Motor	1	Chapter 2/02/25
14	590498510005	Brush Motor	1	Chapter 2/03/01
15	590498510006	Brush Motor	1	Chapter 2/03/03
16	590498510004	Push Motor	1	Chapter 2/04/05
17	590498520096	Bumper Wheel	2	Chapter 2/05/07
18	590498520095	Universal Caster	1	Chapter 2/05/14
19	590498510012	Squeegee	2	Chapter 2/05/20
20	590498520080	Valve	1	Chapter 2/06/02
21	590498520024	Filter	1	Chapter 2/06/03
22	590498510007	Solenoid Valve	1	Chapter 2/06/06
23	590398510004	Key Switch	1	Chapter 2/07/01
24	590398510009	Front Light	1	Chapter 2/07/09
25	590398510008	Emergency Switch	1	Chapter 2/07/12
26	590498520023	Bumper Wheel	2	Chapter 2/08/01
27	590498520007	Brush Strip	2	Chapter 2/08/05
28	590498520025	Wheel	2	Chapter 2/10/04

### 03 Consumable Parts List

No.	Item Code	Item Description	Qty.	Chapter/ Section/ Number
1	590498510013	15 inch Brush	2	Chapter 2/03/11
	590498520112	15 inch Brush (Soft)	2	Chapter 2/03/11
	590498520113	15 inch Brush (Hard)	2	Chapter 2/03/11
	590498510014	15 inch Needle Disk	2	Chapter 2/03/11
2	590498520094	Blade Rear Rubber	1	Chapter 2/05/02
	590498520116	Rear Blade (NR)	1	Chapter 2/05/02
	590498520117	Rear Blade (PU)	1	Chapter 2/05/02
3	590498520090	Blade Front Rubber	1	Chapter 2/05/18
	590498520114	Front Blade (NR)	1	Chapter 2/05/18
	590498520115	Front Blade (PU)	1	Chapter 2/05/18
4	590498520118	White Pad	2	Use With Pad Driver
	590498520119	Black Pad	2	Use With Pad Driver
	590498520134	Red Pad	2	Use With Pad Driver